



Greater Peachtree Borer (*Synanthedon exitiosa*)

Diane Alston, Extension Entomology Specialist • Marion Murray, IPM Project Leader

Do You Know?

- Greater peachtree borer is an important pest of peach, nectarine, apricot, cherry, and plum
- Adults are clearwing moths and larvae are caterpillars that burrow and feed in the cambium beneath the bark near or just below the soil line
- Severe larval feeding can girdle and kill trees
- Mating disruption is an effective control and has been proven in Utah peach orchards as small as one acre in size
- Treatment of lower tree trunks before egg hatch is also effective in preventing injury



Fig. 1. Adult male (l) and female (r) peachtree borers¹



Fig. 2. Peachtree borer larva²

The greater peachtree borer (*Synanthedon exitiosa*) is native to the United States and Canada where wild cherries and plums are its native hosts. It is a sporadic pest in Utah stone fruit orchards, but if left unmanaged it can be severe enough to cause major tree loss. Infestations are more common in home orchards. The adults are clearwing moths (Fig. 1). The larvae are pinkish-white caterpillars that bore into the trunks where they feed just under the bark in the cambial tissue (Fig. 2). There is one generation per year, but some larvae may require two years to complete development (Fig. 3).

Extensive larval feeding can girdle and kill trees. The larvae primarily attack tree trunks just at or below the soil line (Fig. 4), but may enter trunks up to 12 inches above the ground. Other tree problems that are frequently confused with peachtree borer injury include winter freeze and mechanical injury, and infection by canker-causing fungi such as *Cytospora*. All of these problems can cause copious sap or gum to exude from holes or cracks in the bark. Key symptoms of peachtree borer infestation are the presence of sawdust and frass mixed with the gummy exudate near the base of the trunk (Fig. 5).

Prevention is the most effective approach to management. Pheromone-based mating disruption and trunk sprays with synthetic insecticides are the primary management tactics. Adult peachtree borers become active in mid to late June in northern Utah (Fig. 3) and trunks should be protected from tunneling larvae beginning the first week of July (3-4 weeks earlier in southern Utah) through late August to early September.

HOSTS

apricot, cherry, chokecherry, nectarine,
peach, plum, prune

LIFE HISTORY

Adult – Monitoring Stage

- **Color and Appearance:** Similar in appearance to wasps with a metallic-blue body and clear wings; however, the female's forewings are covered with blue scales (Fig. 1). The female has a distinct orange band on the abdomen (Fig. 1); the male has three or four narrow, yellow-white abdominal stripes (Figs. 1 and 7).

- **Size:** Female is about 1 inch long, and male is slightly smaller, with a narrower abdomen.
- **When:** Moths begin flying in early summer, approximately mid June through early September in northern Utah (Fig. 3) and 3-4 weeks earlier in southern Utah; active during the day, especially between 10 am and 2 pm.
- Mating occurs immediately after emergence; females can lay eggs within 30 minutes of mating and each female can lay 200-1200 eggs over her 6-7 day life-span; the majority of eggs are laid in days 1-3.

Egg

- **Size and Shape:** Approximately 0.03 inches long, oval, and hard.
- **Color:** Reddish brown.
- **Where:** Female lays eggs on the lower tree trunk under bark scales, on rough bark, or on nearby soil.
- Hatch occurs in 7-10 days.

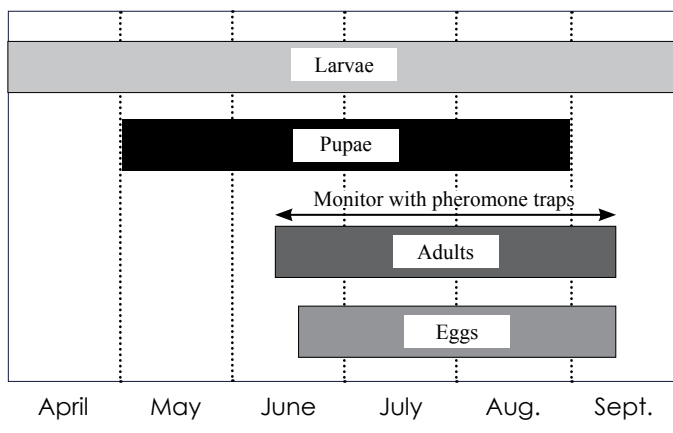
Larva – Damaging Stage

- **Size and Color:** Newly hatched larva is approximately 0.06 inch long; fully grown larva is up to 1.25 inches long; pinkish-white with brown head (Fig. 2).
- **Where:** Larva bores through the bark immediately upon hatching and feeds on inner bark and cambium of the tree, forming galleries.
- Feeds under the bark all summer, and moves down to the base of the tree to overwinter.
- Resumes feeding in the spring when soil temperature reaches 50° F; causes the most damage at this time; pupates in late May to June.

Larva – Overwintering Stage

- **Size and Color:** Can overwinter as 1st to 4th instars; larva size depends on what stage it is in when overwintering begins; pinkish-white with brown head.

Figure 3. Life history of greater peachtree borer for northern Utah. In Utah, there is one generation per year, although some larvae may take two years to develop.



- **Where:** Overwinters under the bark at the base of the tree, usually below ground level (Fig. 4).

Pupa

- **Size and Color:** 0.75 inches long; light brown; held within a cocoon made of silk, gum, and chewed wood fragments.
- **Where:** Usually pupate in the top layer of soil, within a few inches of the host tree. If the tree is very infested, larvae will remain in the tree, and pupate near the bark surface.
- **When:** In the late spring and early summer.
- Two- to four-week development period depending on temperature; soil moisture encourages emergence.
- Pupal skin is left at the base of the tree or in the soil after the adults emerge (Fig. 4).

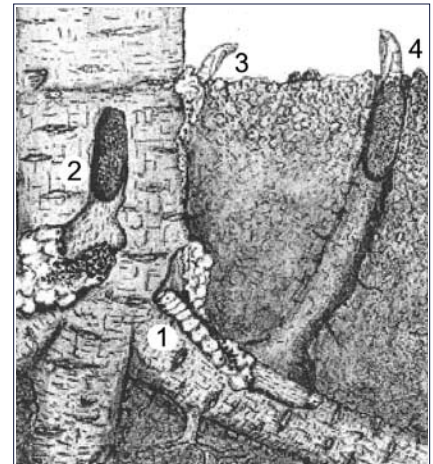


Fig. 4. Peachtree borer life cycle, showing larva (1), cocoon (2), empty pupal case (3), and cocoon with pupa emerging (4).³

HOST INJURY



Fig. 5. Gummy oozing at base of tree in response to borer attack.¹

Greater peachtree borer larvae only attack the lower 12 inches of the host trunk. They most commonly enter at or below ground level, and will occasionally attack larger roots near the surface. Larvae tunnel between the inner bark and sapwood in the cambium, easily girdling and killing young trees in one season. Older trees may withstand the damage, but will be predisposed to attack by other insects and diseases, and can be killed after several years of infestation.

Visual symptoms include dead bark peeling off of damaged areas and masses of gummy sap mixed with sawdust and frass exuding from entry and exit holes (Fig. 5). Leaves of affected limbs will turn yellow and wilt, and the tree canopy will eventually die back. Similar-looking gummy deposits on the upper trunk or limbs are likely caused by winter or mechanical injury or fungal pathogens, and do not indicate infestation by peachtree borer. The presence of peachtree borer can be confirmed by the skins of pupae left attached to the bark of the lower trunk (Fig. 4) or in the soil near the trunk base.

MONITORING & TIMING CONTROL

Look for injury symptoms when pruning trees in the spring and early summer. If symptoms are found, a more intensive control program is needed. Determine the timing of first adult emergence with pheromone traps (Fig. 6). Monitoring adults with traps throughout the summer in stone fruit orchards will provide information on the occurrence and severity of the insect.



Fig. 6. Delta trap for insect monitoring.⁴

Trap Placement and Maintenance

- Delta or wing style pheromone traps can be used to monitor adults (Fig. 6).
- The greater peachtree borer pheromone lure contains a synthetic mimic of the natural sex attractant released by females to attract males for mating. Only male moths are attracted to the pheromone (Fig. 7).
- Place traps with lures by mid June in northern Utah (3-4 weeks earlier in southern Utah) or follow degree-day (DD) model guidelines of 1200 DD since January 1 to place traps. First moths are expected by 1440 DD [lower and upper thresholds for development are 50°F and 88°F, respectively; single sine curve with a vertical cut-off; use codling moth DD model as an approximate surrogate model (refer to [Codling Moth Fact Sheet](#), ENT-13-06)].
- Hang traps from lower tree limbs, preferably no higher than 3-4 feet
- A minimum of two traps should be placed in every orchard. For orchards greater than 10 acres, place one trap for every five acres. Space traps at least 60 feet apart to avoid inter-trap interference.

- The pheromone lure is not species specific, so other species of clearwing moths may be caught in traps. Examine trapped moths carefully to identify greater peachtree borer moths (Fig. 7).
- Check traps every 1-2 days until the first moth is caught.
- Initiate control practices immediately after detecting the first adult activity as mating and egg-laying begins soon after adult emergence.



Fig. 7. Adult male peachtree borer on sticky trap.⁴

MANAGEMENT

Protection of host trees from peachtree borer is the most critical during the first three to five years after planting. Since the 1950s, the main control method of peachtree borer has been a preventive trunk application of synthetic insecticides. Currently there are few registered insecticides with adequate longevity to protect trunks from egg-laying and hatching larvae. A mating disruption product is now available and is the recommended control for commercial stone fruit orchards. For orchards less than one acre, or for home yard trees, preventive trunk sprays are the primary control available.

Mating Disruption

Mating disruption (MD) of greater peachtree borer has been proven effective in Utah, even in peach orchards as small as one acre.

- Place pheromone dispensers throughout the orchard immediately after the first trap catch. Secure dispensers on lateral branches, above the mid-point of trees. Apply a minimum of 100 dispensers per acre. (Dispenser brands include Isomate®-P, Pacific Biocontrol Corp.; *S. exitiosa* product, ISCA Technologies; and 3M MEC-PTB Sprayable Pheromone, Advan L.L.C.)
- Only a single application is required as dispensers may release pheromone up to 120 days.
- Effective MD should completely shut-down moth catch in pheromone traps (Fig. 8).

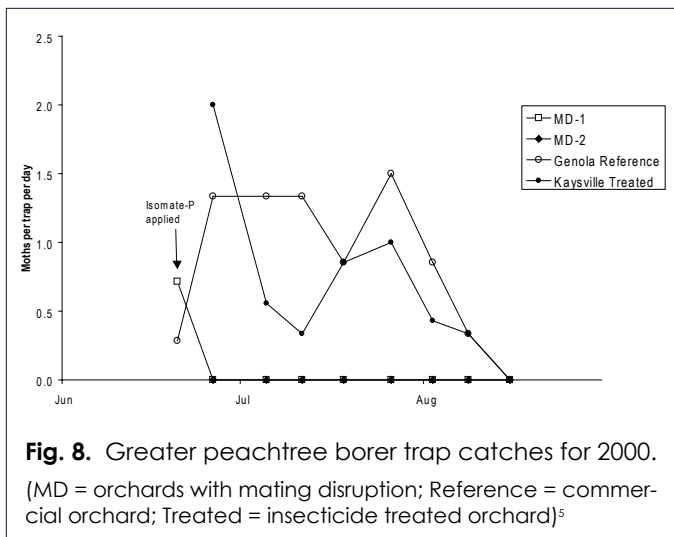


Fig. 8. Greater peachtree borer trap catches for 2000.

(MD = orchards with mating disruption; Reference = commercial orchard; Treated = insecticide treated orchard)⁵

Insecticides

Only a small number of products are registered for peachtree borer that have adequate longevity to protect trees from egg-laying and tunneling larvae for several weeks to a month. Apply the first application immediately after first trap catch or no later than the first week of July in northern Utah (3-4 weeks earlier in southern Utah), and repeat applications based on product label guidelines. Follow the required pre-harvest interval (time between last application and allowed harvest of fruit) of insecticide products. Apply insecticides as a bark drench at a rate of one-half to one gallon of spray mix per tree. Thoroughly cover the lower 12 inches of trunk and soak the ground at the base of the tree. Do not allow the sprays to contact fruit. Remove prunings, debris, or weeds at the base of trees to avoid interference with spray coverage.

- chlorpyrifos (Lorsban)
- endosulfan (Thionex)*
- carbaryl (Sevin)*
- lambda-cyhalothrin (Warrior)
- permethrin (Ambush, Pounce, many brands)*

*Insecticide products that may also be available for use on home fruit trees.

NOTE: All brand names are registered trademarks. Examples of brands may not be all-inclusive, but are meant to provide examples of effective insecticides registered on peach in Utah.

The availability of insecticides is changing rapidly. Always check the label for registered uses, application and safety information, and protection and pre-harvest intervals.

Cultural and Mechanical Controls

- Select appropriate fruit tree species for the site to avoid stressed and unhealthy trees.
- Use good cultural practices (i.e., fertilization, irrigation, etc.) to maintain trees in a healthy and vigorous state.
- Paint trunks with a 1:1 dilution of white latex paint to water, or apply wrap in the winter to prevent southwest winter injury. The latex paint has also been shown to slightly deter egg-laying.
- Do not place tree wrap on trees during the summer. This has been shown to increase borer attack.
- Avoid mechanical and rodent-caused injuries to trunks.
- Certain rootstocks have been found to result in fewer emerging adults. 'Siberian C' peach rootstock had 40% fewer emerging adults than 'Lovell' rootstock in one study.
- Larvae inside trunks can be killed by inserting a knife or wire into entry holes. Kill larvae in the late summer and fall before they spend the winter and inflict their most extensive feeding damage the following spring.
- Keep the base of trees free of vegetation. Heat and dryness reduce the survival of eggs and larvae.

Biological Control

Several species of parasitic wasps have been reared from larvae or pupae of peachtree borer. We do not have information on occurrence of parasitoids attacking peachtree borer in Utah. Parasitoids identified from elsewhere include wasps from the following families: Braconidae, Eulopidae, Ichneumonidae, and Scelionidae. The entomopathogenic nematodes, *Steinernema carpocapsae* and *Heterorhabditis bacteriophora*, have been shown to control borer larvae if sprayed on frass-surrounded bark cracks during the summer. This method helps with killing borer larvae that have already infested the tree, but is not a preventive control.

¹Images courtesy of H. C. Ellis, University of Georgia (www.ipmimages.org)

²Image courtesy of Clemson University, USDA Cooperative Extension Slide Series (www.forestryimages.org)

³Illustration courtesy of Gossard & King, 1918, Ohio Agric. Experiment Station, Bulletin 329

⁴Images courtesy of Shawn Steffan, USU Extension

⁵Graph courtesy of Diane Alston, USU Extension

Precautionary Statement: All pesticides have benefits and risks, however following the label will maximize the benefits and reduce risks. Pay attention to the directions for use and follow precautionary statements. Pesticide labels are considered legal documents containing instructions and limitations. Inconsistent use of the product or disregarding the label is a violation of both federal and state laws. The pesticide applicator is legally responsible for proper use.

Utah State University is committed to providing an environment free from harassment and other forms of illegal discrimination based on race, color, religion, sex, national origin, age (40 and older), disability, and veteran's status. USU's policy also prohibits discrimination on the basis of sexual orientation in employment and academic related practices and decisions. USU employees and students cannot, because of race, color, religion, sex, national origin, age, disability, or veteran's status, refuse to hire; discharge; promote; demote; terminate; discriminate in compensation; or discriminate regarding terms, privileges, or conditions of employment, against any person otherwise qualified. Employees and students also cannot discriminate in the classroom, residence halls, or in on/off campus, USU-sponsored events and activities. This publication is issued in furtherance of Cooperative Extension work. Acts of May 8 and June 30, 1914, in cooperation with the U.S. Department of Agriculture, Noelle Cockett, Vice President for Extension and Agriculture, Utah State University.